

Dear Participant,

With the Joint European Magnetic Symposia 2022 commencing on Sunday 24 July 2022, our preparations are almost complete, and we look forward to welcoming you to Warsaw.

The following details may assist with your arrival at the Conference.

The Conference is being held at the [University of Warsaw](#) Old University campus, which is located at [Krakowskie Przedmieście 26/28 Str. 00-927 Warsaw, Poland](#).

We have prepared information to assist your arrival in Warsaw and at the Conference. This information is available at <https://jems2022.pl> and includes the below topics:

1. [Location of Venue](#)
2. [Public transport in Warsaw](#)
3. [Airport and Transport](#)
4. [Parking](#)
5. [Plan your arrival to Poland](#)
6. [Checking into your Hotel](#)
7. [Registration Process](#)

If you are an international visitor, please note that you may need a valid visa to enter Poland. If you have not obtained a visa, you must contact your nearest Poland Embassy as a matter of extreme urgency. Visas cannot be issued on arrival in Poland.

We are pleased that the dedicated efforts of the Organizing and Program Committees will result in a Conference of excellence and a very valuable experience for all participants.

We look forward to welcoming you to Warsaw!

Yours sincerely,

JEMS2022 Organizing Committee

Coronavirus - entering Poland information and regulations.

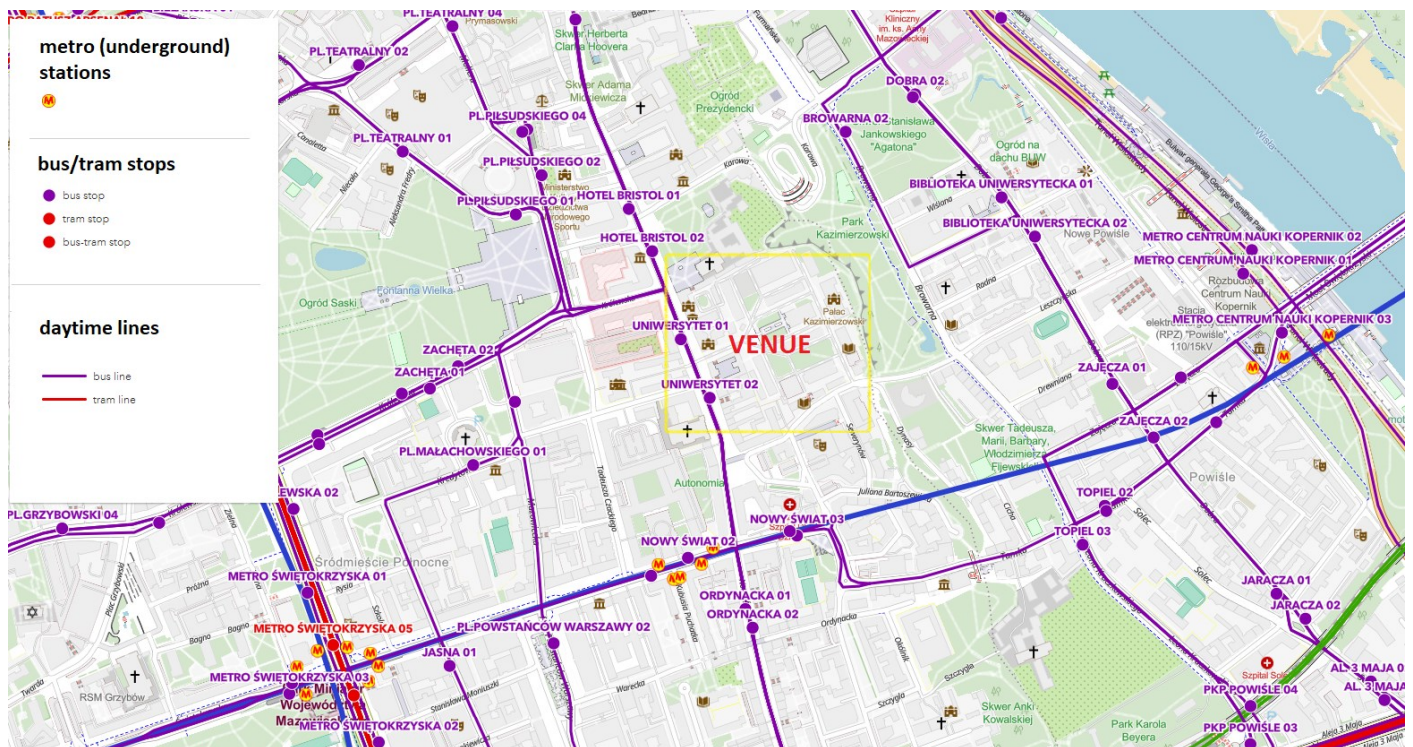
From 28 March 2022 onwards, all restrictions on travel to the Republic of Poland are lifted, **which means there is NO obligation to:**

- present COVID certificates when crossing the border;
- test for SARS-CoV-2;
- undergo the so-called entry quarantine;
- **wearing a face mask.**

However, due to a very recent surge in infection cases we recommend wearing masks and keep the social distancing at the Conference venue. Masks will be provided by the Conference.

1. Location of Venue

The onsite part of JEMS 2022 Conference will be held at the University of Warsaw Old University campus in the heart of the center of historical Warsaw. The closest public transport stops are **Uniwersytet 01/02** bus stops (except of Sunday 24 July 2022, buses [106](#), [111](#), [116](#), [128](#), [175](#), [178](#), [180](#), [222](#), [503](#), [518](#)) and **Nowy Świat Metro** (underground trains) station. The Concierge Desk at your hotel will assist you with directions and transport options if necessary.



2. Public transport in Warsaw

The area serviced by the public transport organized by Warsaw Transport Authority (WTP) is divided into two [ticket zones](#) – 1 and 2. Most area of Warsaw is covered by ticket **zone 1**, including the Conference Venue and Warsaw Chopin airport, so in typical situations the using of **zone 1** ticket is sufficient (for more detailed information about the transport from/to airports including Warsaw Modlin airport see below). The carriage of animals and luggage is free.

The public transport network in Warsaw (WTP) includes [buses](#), [trams](#), [subway](#) (called here Metro) and [SKM trains](#).

In addition – on the basis of a daily or longer ticket – you can travel by [KM and WKD trains](#).

WTP vehicles can be used on the basis of [time tickets](#) (20-minute, one-time 75-minute, one-time 90-minute, group 75-minute), [short-term tickets](#) (daily, 3-day, weekend, group weekend) and long-term tickets (30- and 90-day). Time and short-term tickets have the form of a paper ticket, and long-term tickets are coded on the Warsaw City Card.

Time and short-term tickets (contrary to those bought in ticket machines installed in WTP vehicles) should be [validated](#) immediately after entering the vehicle or at the subway gate. Tickets purchased in ticket machines in vehicles are already validated at the time of purchase. In both cases the validity of the ticket is clearly printed on the ticket. Tickets coded on cards must be activated by bringing them closer to the validator or subway gate.

WTP tickets can be [purchased](#) at ticket machines, selected kiosks and stores, Passenger Service Points and via mobile applications.

You can plan your trip by several mobile applications including [jakdojade](#) and Google Maps.

Where to buy a ticket?

At the Passenger Service Points.



At the Ticket Machines, which are located in most vehicles, near (only) some bus stops and Metro stations (but not on platforms). In vehicles you can buy only single and long-term tickets
Stationary ticket machines accept cash and card payments.



The tickets sold in stationary ticket machines are printed on a cardboard and differ from the tickets sold inside busses and trams. Ticket machines in vehicles accept ONLY card payments. Tickets purchased in ticket machines in vehicles are already validated at the time of purchase:



An example of a WTP ticket (left) bought in ticket machines located inside buses and trams (right).

By Mobile Phone



There are several applications that allow you to buy one-off and short-term tickets (for more information see [here](#))

Ticket fares

20 Minute Ticket

20 minute ticket entitles to an unlimited number of journeys for a period not exceeding 20 minutes from its validation

zone 1+2

standard **3,40 zł**
reduced-fare **1,70 zł**



Single-fare 75 minute ticket

Single fare transfer ticket entitles to an unlimited number of journeys for a period not exceeding 75 minutes from its validation or entitling to a single journey to a stop or station which is the last on the route.

zone 1
 standard **4,40 zł**
 reduced-fare **2,20 zł**



Single-fare 90 minute ticket

Single fare transfer ticket entitles to an unlimited number of journeys for a period not exceeding 90 minutes from its validation or entitling to a single journey to a stop or station which is the last on the route.

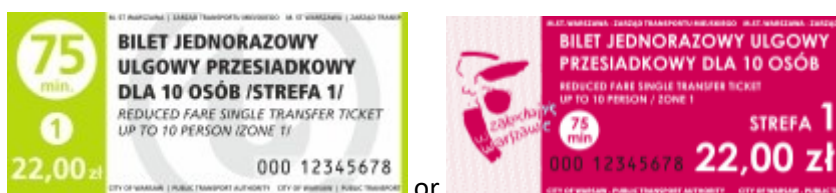
zone 1+2
 standard **7 zł**
 reduced-fare **3,50 zł**



Group ticket 75 minute

Single fare transfer group ticket entitles a group up to 10 people to an unlimited number of journeys for a period not exceeding 75 minutes from its validation or entitling to a single journey to a stop or station which is the last on the route.

zone 1
10 people
 reduced-fare **22 zł**



The tickets listed above are:

- not valid on buses “L” lines type
- not valid in Park&Ride parkings (P+R)
- valid on SKM train lines S2, S3 and Koleje Mazowieckie train line RL on the basis of additional honouring ZTM tickets on the route on the route:
S2: Warszawa Wschodnia – Chopin Airport
S3, RL: Warszawa Płudy – Warszawa Zachodnia

One-day ticket (24h)

One-day ticket entitles to unlimited number of journeys for 24 hours from its validation

zone 1
 standard **15 zł**
 reduced-fare **7,50 zł**



OR

One-day ticket (24h)

One-day ticket entitles to unlimited number of journeys for 24 hours from its validation

zone 1+2
 standard **26 zł**
 reduced-fare **13 zł**



OR

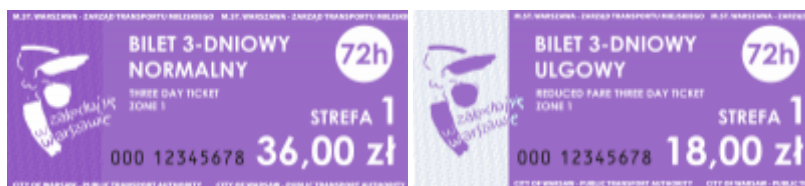
3-day ticket (72h)

3-day ticket entitles to unlimited number of journeys for 72 hours from its validation

zone 1
 standard **36 zł**
 reduced-fare **18 zł**



OR



3-day ticket (72h)

3-day ticket entitles to unlimited number of journeys for 72 hours from its validation

zone 1+2
standard **57 zł**
reduced-fare **28,50 zł**



OR



- The tickets listed above are: valid on buses “L” lines type
- valid in Park&Ride parkings (P+R)
- valid on SKM train lines S2, S3 and Koleje Mazowieckie train line RL on the basis of additional honouring ZTM tickets on the route on the route:
S2: Warszawa Wschodnia – Chopin Airport
S3, RL: Warszawa Płudy – Warszawa Zachodnia

Information about the discount entitlements is available [here](#). **Students of foreign universities, up to the 26 years of age (the 26th birthday date counts), with ISIC (International Student Identity Card) valid for a given calendar year meet the 50% discount (“ulgowy” ticket) requirements, the virtual ISIC card is not valid. There is no information about any discount for PhD students from abroad.**

The full information about the public transport in Warsaw is available at the [WTP web-page](#).

3. Airport and Transport

Warsaw F. Chopin Airport (WAW)

Warsaw Chopin Airport (Lotnisko Chopina) is located within a distance of 8 kilometers from the centre of Warsaw. The airport is connected by a few lines of the public transport (WTP). The airport is served by five bus lines, two of which reach the city centre directly – 175 and a night bus N32. A railway connection with Chopin Airport is also available. If you decide to take a taxi, a fare to the centre should be around PLN 40-50 (EUR 10). You also can use Uber or Bolt applications, the ride cost will be cheaper than for the conventional taxi ones. In this case you can take your taxi only from the upper departure level. The lower arrival lever is reserved exclusively for the officially appointed Taxi company.

Public transport tickets on the airport premises can be bought:

- at the Passenger Service Centre in the arrival hall,
- from ticket vending machines located at bus stops and by the entrance to a railway station,
- from ticket vending machines in SKM trains and in most buses.



Bus

Four day bus lines and one night line reach the airport:

- [line 175](#) from Plac Piłsudskiego through Krakowskie Przedmieście (near the Conference venue), Nowy Świat, Aleje Jerozolimskie (the Centrum underground station, Warszawa Centralna /Warsaw Central Station/ and Warszawa Śródmieście railway stations) and Plac Zawiszy,
- [line 188](#) from Praga-Południe through Trasa Łazienkowska (the Politechnika underground station),
- [line 148](#) from Praga-Południe through Mokotów and Ursynów (the Imielin underground station),
- [line 331](#) from the Wilanowska underground station (it runs only on weekdays at peak hours),
- [night line N32](#) from the Warszawa Centralna railway station /Warsaw Central Station/ (a night interchange point).



Buses **arriving** at the airport stop at **the upper level** of the terminal (by the departure lounge) and by the coach terminal. After dropping off passengers, they go to a technical stop located outside the terminal.



Buses **departing** from the airport take passengers from **the lower level** of the terminal (by the arrival hall) and from a stop behind the coach terminal. It is forbidden to board buses at the upper level (by the departure lounge) in order to leave the airport.



Train

There is an underground Warsaw Chopin Airport railway station located at the airport complex. Currently only one service which operates from there (approx. every 25 minutes):

[S2 SKM trains](#) from the Warszawa Śródmieście (a station located at the city centre) through Warszawa Zachodnia

ATTENTION! Passengers who, upon entering trains, have non-legalized / non-activated ZTM ticket, are obliged to enter the train through the first door (from the front of the train) and report to the train manager in order to legalize or activate the ticket.



Warsaw Modlin Airport (WMI)

Warsaw Modlin Airport – a smaller airport servicing only budget airlines is situated in Modlin, 35 km from Warsaw.

Currently the carriers offering direct bus connections from Warsaw Modlin Airport to Warsaw City Center are CONTBUS and FLIXBUS.

In case of CONTBUS buses, arrivals and departures from Warsaw are carried out from the stop located at the ["Marriott" Hotel](#) (corner of T. Chałubińskiego and Nowogrodzka Streets), approx. 100 meters from the Central Railway Station. However the company web-page is only in Polish, so it is easier to buy ticket in the bus.



The other bus option is [FLIXBUS](#) with costs around PLN 30-45 (up to EUR 10). There is a possibility of purchasing a ticket via the mobile application or directly from the driver, the option of tracking the location of the bus in real time "Where is my FlixBus", the system of full seat reservation, the possibility of free cancellation up to 15 minutes before departure.



Direct FlixBus journeys from Warsaw City Center to the Warsaw Modlin Airport are available from 3 stops:

- [Warsaw West Bus Station, Aleje Jerozolimskie 144](#)
- [Metro Młociny, ul. Jan Kasprówicz 145](#)
- [Chopin Airport, ul. Żwirki i Wigury 1](#)

Another service connecting Modlin Airport with Warsaw is provided by [Koleje Mazowieckie](#) (*Masovian Railway*) trains, which offer mixed bus&train travel: there are special airport busses covered in the colors of Koleje Mazowieckie, running every 20-30 minutes between [Warsaw Modlin Airport](#) terminal and [Modlin railway station](#), where you should change the bus to train . Journey takes around 1 hour 15 minutes and the ticket at the amount of PLN 19 (EUR 4) can be purchased at the Airport terminal.



It is also possible to get to the city by taxi. Prices may vary between PLN 100-200 (EUR 25-50).

More information about the Warsaw Modlin Airport can be found at the airport [web-page](#).

4. Parking

In Warsaw, zones for unguarded paid parking are located in several districts, mostly around the City Centre, For a map and detailed list of streets with paid parking, refer to [zdm.waw.pl](#).

Unguarded paid parking zones are in effect from Monday to Friday between 8.00 a.m. and 8.00 p.m. On Saturdays, Sundays and public holidays parking is free.

At all times the availability of parking places is rather limited.

Fees:

- first hour: PLN 3.90
- second hour: PLN 4.60
- third hour: PLN 5.50N
- fourth and every subsequent hour: PLN 3.90 each

The minimum parking fee is PLN 0.50, which equals 10 minutes of parking.

You can pay for parking at the parking meter (payment is possible with coins and cards) or using the mobile payment system. Two applications are used for this: MobiParking or moBILET.

Detailed information on parking fees in paid parking zones can also be found on zdm.waw.pl.



Failure to pay for parking your car in the paid parking zone may result in an additional fee of PLN 250.

Parking for vehicles of people with disabilities

Within the paid parking zone, there are specially marked parking spaces, the so-called “envelopes”, for vehicles of people with disabilities with a special Parking Card.

Parking on the envelopes is free with the Parking Card displayed behind the windscreen of the vehicle. More information can be found on zdm.waw.pl.

5. Plan your arrival to Poland

Coronavirus - entering Poland information and regulations.

From 28 March 2022 onwards, all restrictions on travel to the Republic of Poland are lifted, **which means there is NO obligation to:**

- present COVID certificates when crossing the border;
- test for SARS-CoV-2;
- undergo the so-called entry quarantine;
- **wearing a face mask.**

However, due to a very recent surge in infection cases we recommend wearing masks and keep the social distancing at the Conference venue. Masks will be provided by the Conference.

Customs

Please ensure that along with your passport (and in some cases visa), you also pack your registration confirmation letter within your carry-on luggage, you may be asked to produce this when moving through customs at your arrival airport.

Currency in Poland

Decimal currency is used in Poland with the Polish złoty (PLN) as the basic unit (100 grosz = PLN 1). Notes come in PLN 500, 200, 100, 50, 20 and 10. Coins come in PLN 5, 2, 1 and 50, 20, 10, 5, 2 and 1 grosz denominations. Currency exchange facilities are available in most banks and airports and operate during normal business hours. One can also exchange currency at numerous exchange hubs (“Kantor”). They are legal here and operate on the basis of a spread not by adding a commission to the transaction.

To view the current foreign exchange rates, please visit <http://www.x-rates.com>.



Emergency Number

If there is an emergency while at any of the conference venues during the meeting, immediately report to one of our onsite staff members or the venue staff. This is to ensure prompt and efficient response from emergency services. Outside the conference, Fire, Police and Ambulance can all be reached by dialing **112**.

Credit, Banking and ATM's

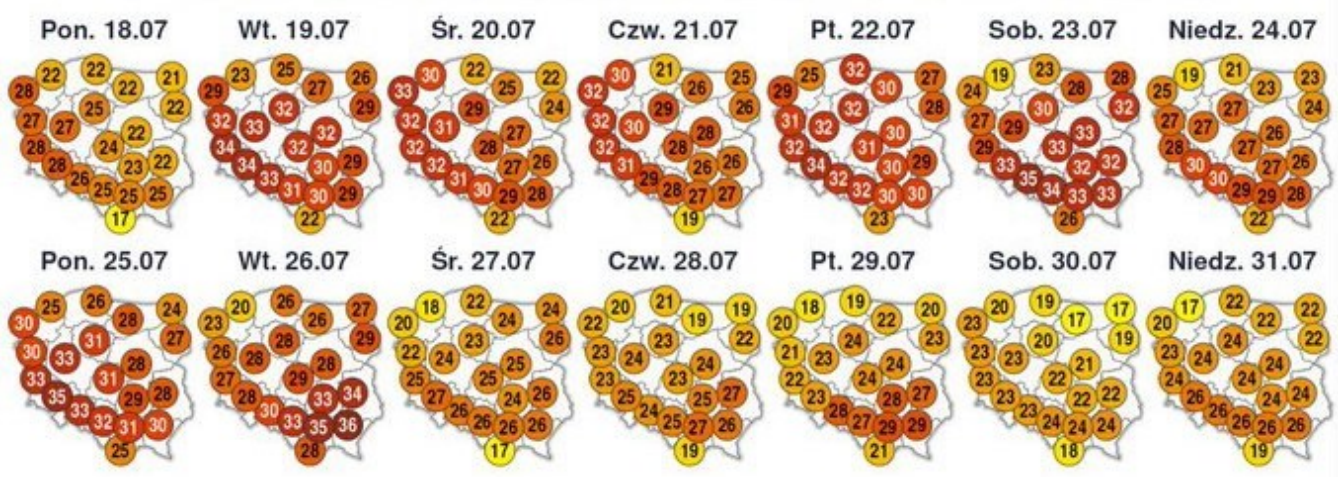
Credit cards are accepted at most restaurants and shops - the most widely used being MasterCard, Visa and American Express. Banks generally open from 09:00 – 17:00 hours from Monday to Friday.

Automated Teller Machines (ATM's) are freely available throughout the city including those located near the Venue.

Weather

July is Summer in Warsaw and the average temperature ranges from 17 – 26 degrees Celsius. Warm evenings are expected, but thunderstorms are likely on particularly hot days. An umbrella will be a wise choice.

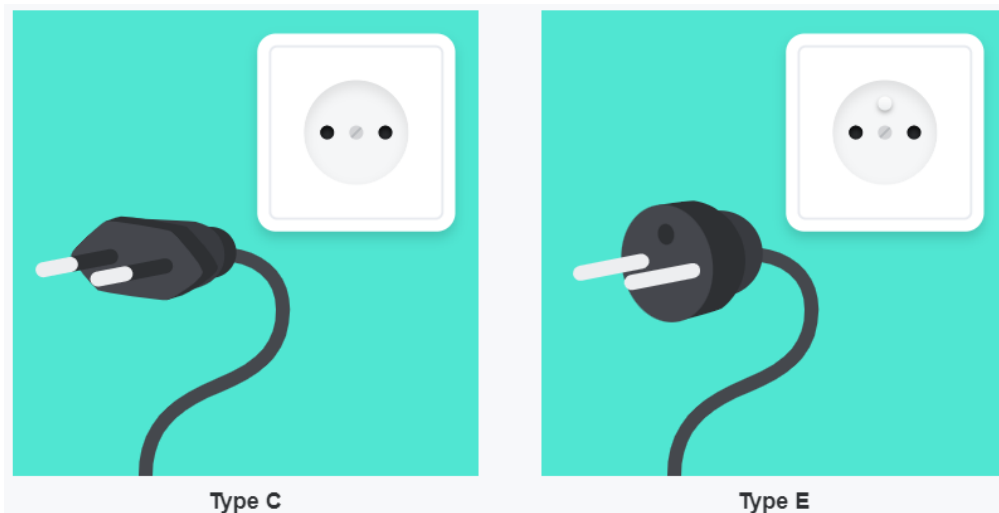
Currently, a long term forecast predicts a hot start of the week 24-30 July with conditions relaxing towards month expectance at the end of the week:



Refer here <https://meteo.imgw.pl/dyn/#group=nwp¶m=t-2-agl&model=alaro4k0&loc=52,19,7> for the weather forecast update (including current radar scans of rain falls and thunderstorms).

Electric Current

In Poland there are two associated plug types, types C and E. Plug type C is the plug which has two round pins and plug type E is the plug which has two round pins and a hole for the socket's male earthing pin. Poland operates on a 230V supply voltage and 50Hz.



6. Checking into your Hotel

For most hotels the check-in time is 15:00 hours. Your hotel will do their best to have rooms available for early check-in, however if you wish to confirm your room for an early arrival, you will need to pre-book and pay for the room from the previous evening.

7. Registration Process

All participants must visit the registration desk to collect their name badge before gaining access to the Conference.

Registration desk opening times:

Sunday 24 July 15:30 – 19:30

Monday 25 July 08:00 – 19:15

Tuesday 26 July 08:00 – 19:15

Wednesday 27 July 08:00 – 20:00

Thursday 28 July 08:00 – 20:00

Friday 29 July 08:00 – 16:45